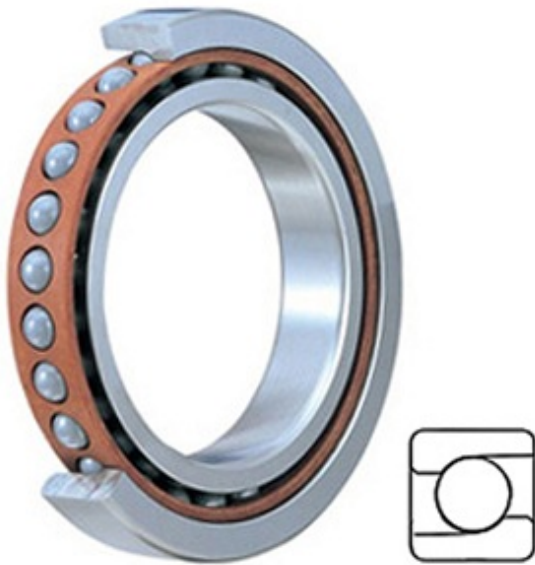




MACHINE PRECISION AXLE CORP.



1.181 Inch | 30 Millimeter x 1.85 Inch | 47 Millimeter x 0.354 Inch | 9 Millimeter TIMKEN 2MMV9306HX SUM Precision Ball Bearings

Bearing No. 2MMV9306HX SUM

2MMV9306HX SUM Bearing 2D drawings and 3D CAD models

Category	Precision Ball Bearings
Inventory	0.0
Manufacturer Name	TIMKEN
Minimum Buy Quantity	N/A
Weight	0.05
Product Group	B04270
Enclosure	Open
Precision Class	ABEC 7 ISO P4
Material - Ball	Steel
Number of Bearings	1 (Single)
Contact Angle	15 Degree
Preload	Medium
Raceway Style	1 Rib Inner Ring and Outer Ring
Cage Material	Phenolic
Rolling Element	Ball Bearing
Mounting Arrangement	Universal
Flush Ground	Yes
Inch - Metric	Metric
Other Features	Single Row Angular Contact Super High Precision
Long Description	30MM Bore; 47MM Outside Diameter; 9MM Width; Open Enclosure; ABEC 7 ISO P4 Precision; Steel Ball Material; 1



MACHINE PRECISION AXLE CORP.

	(Single) Bearings; 15 Degree Contact Angle; Phenolic Cage Material; 1 Rib Inner Ring and
Category	Precision Ball Bearings
UNSPSC	31171531
Harmonized Tariff Code	8482.10.50.28
Noun	Bearing
Keyword String	Angular Contact Ball
Manufacturer URL	http://www.timken.com
Manufacturer Item Number	2MMV9306HX SUM
Weight / LBS	0.11
B	0.354 Inch 9 Millimeter
d	1.181 Inch 30 Millimeter
D	1.85 Inch 47 Millimeter